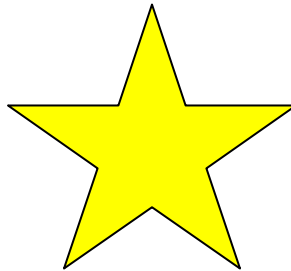




## ***PowerHome™2 Quick Start Guide***

*Now with Quick SetUp Wizards*



***Empower Your Home™ With PowerHome***

Copyright © 1999,2008 PowerHome Automation, LLC  
PowerHome™ and Empower Your Home™ are Trademarks of PowerHome Automation, LLC  
Web: <http://www.Power-Home.com>  
Email: [support@Power-Home.com](mailto:support@Power-Home.com)

<i>Special Notice</i> .....	3
<i>Introduction</i> .....	4
A Brief Message for Beginners .....	4
<i>Installation</i> .....	5
2.1    Installing PowerHome2 .....	5
2.2    Starting PowerHome2 the First Time .....	5
2.2    The Wizards .....	6
2.2.1    The Controller Wizard .....	6
2.2.2    The Device Wizard .....	11
2.2.2.1    Insteon Devices.....	12
2.2.2.2    UPB Devices .....	14
2.2.2.3    X-10 Devices .....	16
2.2.3    The Timed Events Wizard .....	18
2.2.4    The Control Center Wizard .....	22
<i>Appendix</i> .....	25
Key Features of PowerHome .....	25
Technical Overview .....	25
System Requirements .....	26

## ***Special Notice***

Please see the WHATS NEW section of the README.RTF file included in the PowerHome2 software for the latest information about PowerHome2.

## **Introduction**

PowerHome2 is an extremely powerful and flexible Windows based software package that will give you full control over your home's lighting, appliances, infrared, audio and video devices when used in conjunction with the appropriate control hardware.

With PowerHome2's programmable interface, this control can be achieved via keyboard, mouse, touch screen, web, email, X-10, Insteon, UPB, IR, RS-232, voice recognition, socket communications, Windows Messaging, and even your internet enabled cell phone.

This Quick Start Manual along with the new SetUp Wizards ★ will get you up and running in minutes.

### ***A Brief Message for Beginners***

PowerHome2's flexibility and power may be overwhelming at first. The new SetUp Wizards allow you to control your home with a core set of features. Absent from this guide will be details on creating macros, formulas, complex times events etc. As you become comfortable with PowerHome2, you may gradually work into these advanced features for the ultimate in power and functionality. Remember, don't be afraid to experiment and don't be afraid to ask questions on the PowerHome message board at [www.power-home.com](http://www.power-home.com).

All features of PowerHome, including the advanced features, can be found in the PowerHome Users Manual which is continually updated to include new topics.

## Installation

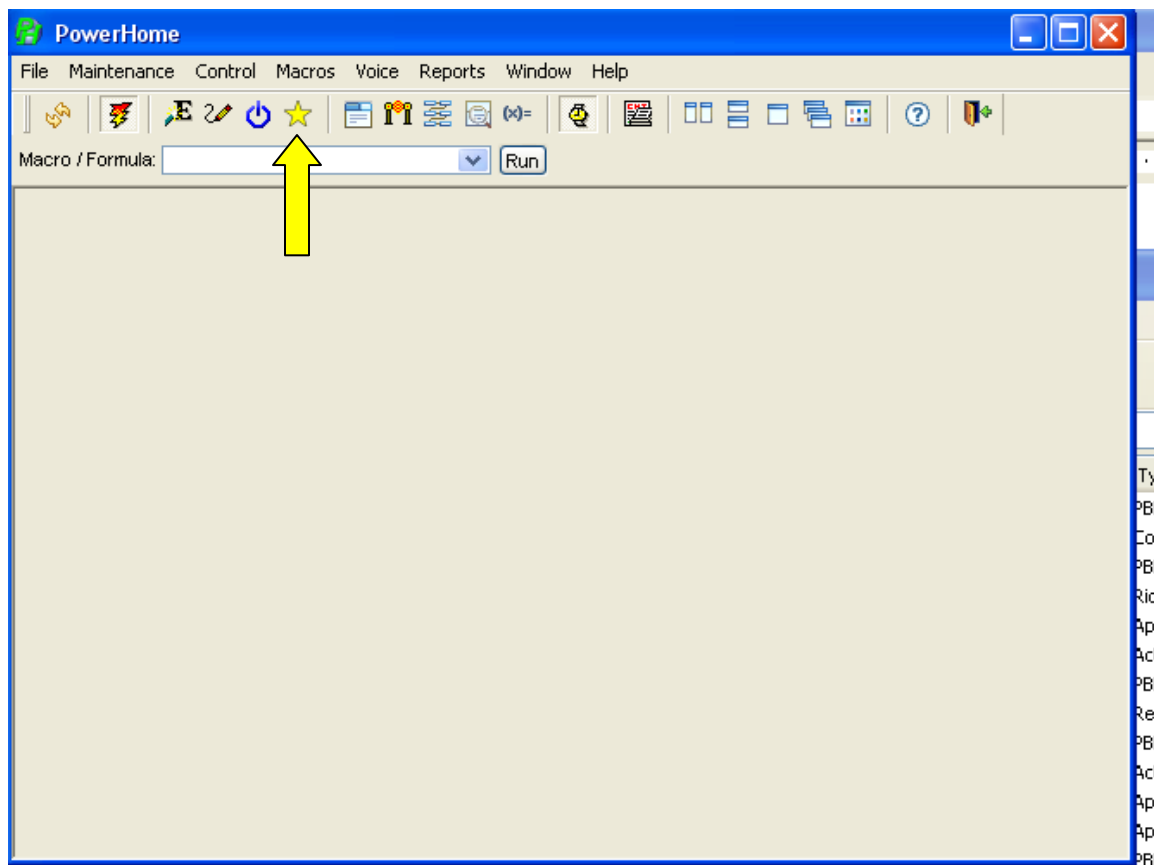
### 2.1 Installing PowerHome2

PowerHome2 can be downloaded from <http://www.power-home.com> and is fully functional with a 30 day evaluation period. After the evaluation period has expired, PowerHome2 will not send commands to hardware controllers and will have to be registered. You may purchase an unlock key from the above website.

If you are installing PowerHome2 for the first time, just run the **setup.exe** file and follow the instructions on the screen. If you are upgrading from a previous version, please follow the upgrade instructions on the website.

### 2.2 Starting PowerHome2 the First Time

When starting PowerHome2 for the first time, you will be asked to enter a registration name. This name must be between 5 and 50 characters and will be used to generate your registration number. This registration number can be found under the menu **Help->About**. After the registration name has been entered, PowerHome2 will be running. This is the screen you should see. Note the Wizards' toolbar button.



## 2.2 *The Wizards*★

PowerHome2 includes four Wizards that help you get PowerHome2 up and running quickly.

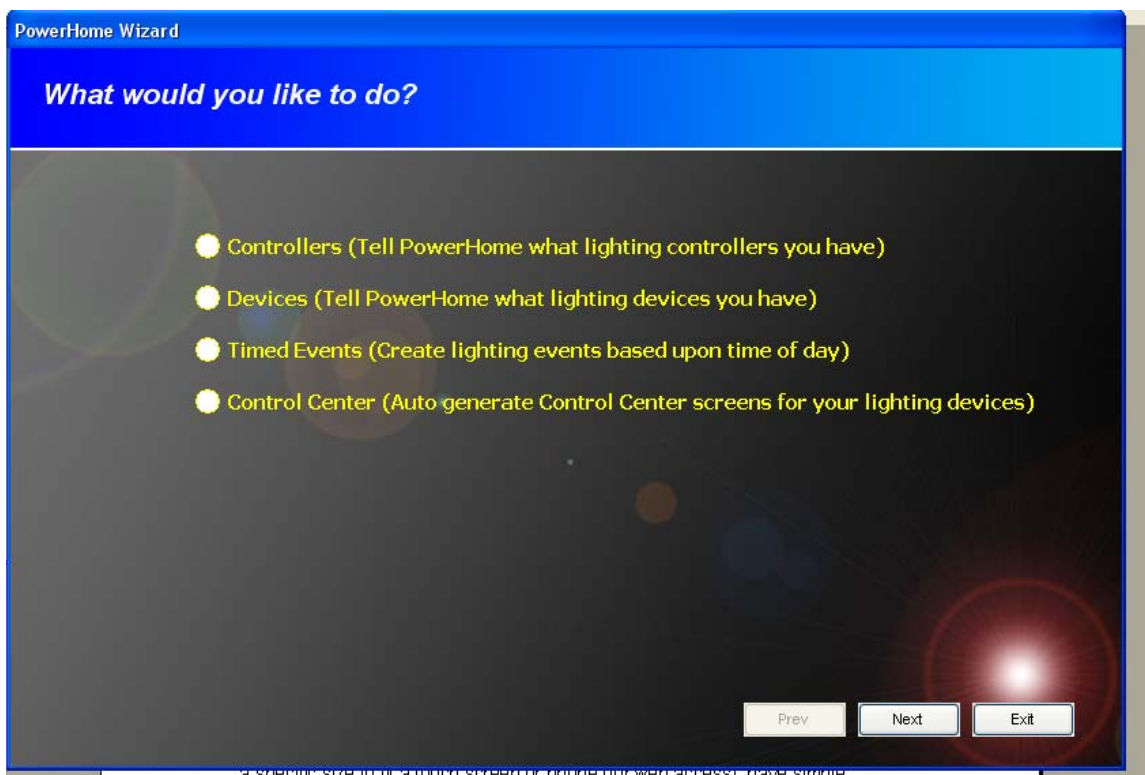
- The **Controller Wizard** guides you through setting up your Insteon, UPB or X-10 controller.
- The **Device Wizard** guides you through setting up your Insteon, UPB or X-10 Devices (e.g. lighting switches).
- The **Timed Event Wizard** helps you set up basic control of your automation devices based upon time. For example, setting an outside light to turn on at Dusk.
- The **Control Center** wizard automatically takes the information the Controller and Device Wizards have gathered and creates screens with graphical on/off buttons for each device. A screen is created for each room if you have previously entered the room locations for each device.

### 2.2.1 *The Controller Wizard*★

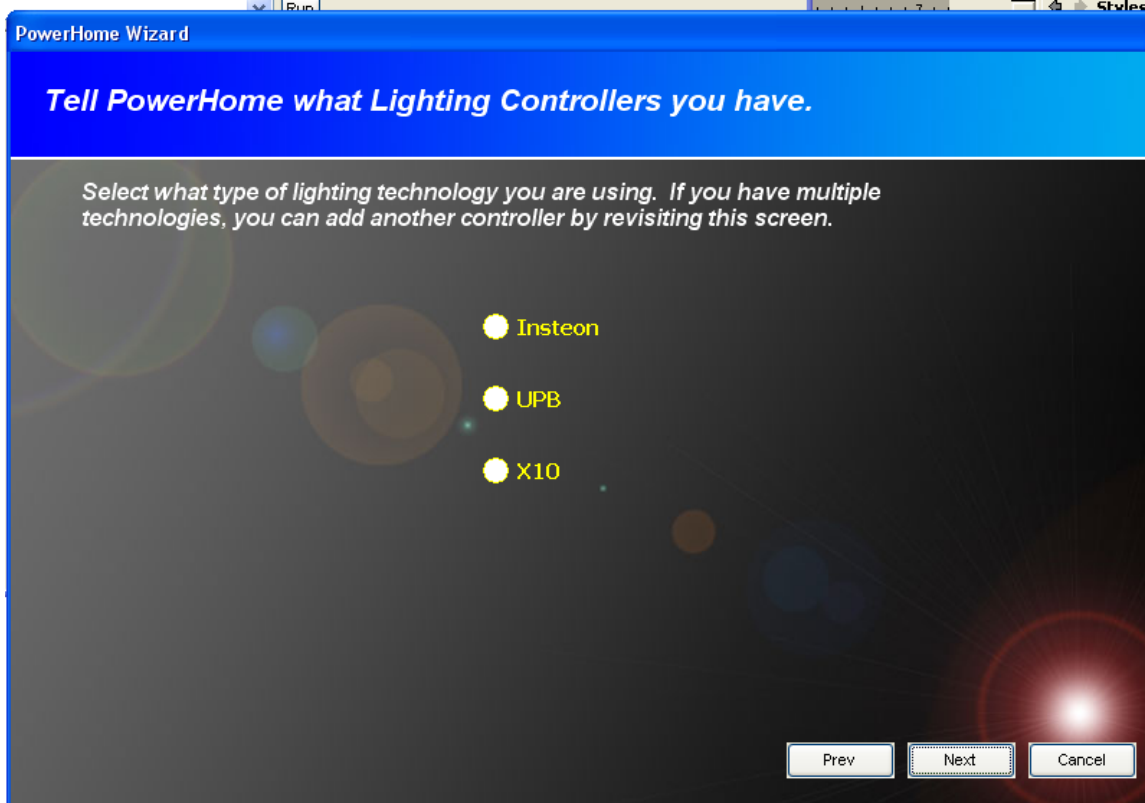
A Controller connects your PC to your home automation devices. PowerHome2 lets you connect multiple Controllers to your PC. The Controller Wizard takes you through the steps necessary to connect Insteon, UPB, and X-10 controllers to your PC. Other types of Controllers can also be connected but not by using this Wizard. See the manual for further details.

To connect an Insteon, UPB or X-10 controller to your PC, first connect the Controller to your PC and plug it into the wall AC receptacle.

1. Click on the Wizard toolbar button★ to bring up the Wizard screen shown below.



2. Click on the radio button next to "Controllers (Tell PowerHome what lighting controllers you have)".
3. Click Next.



4. Click on the appropriate radio button.
5. Click Next.

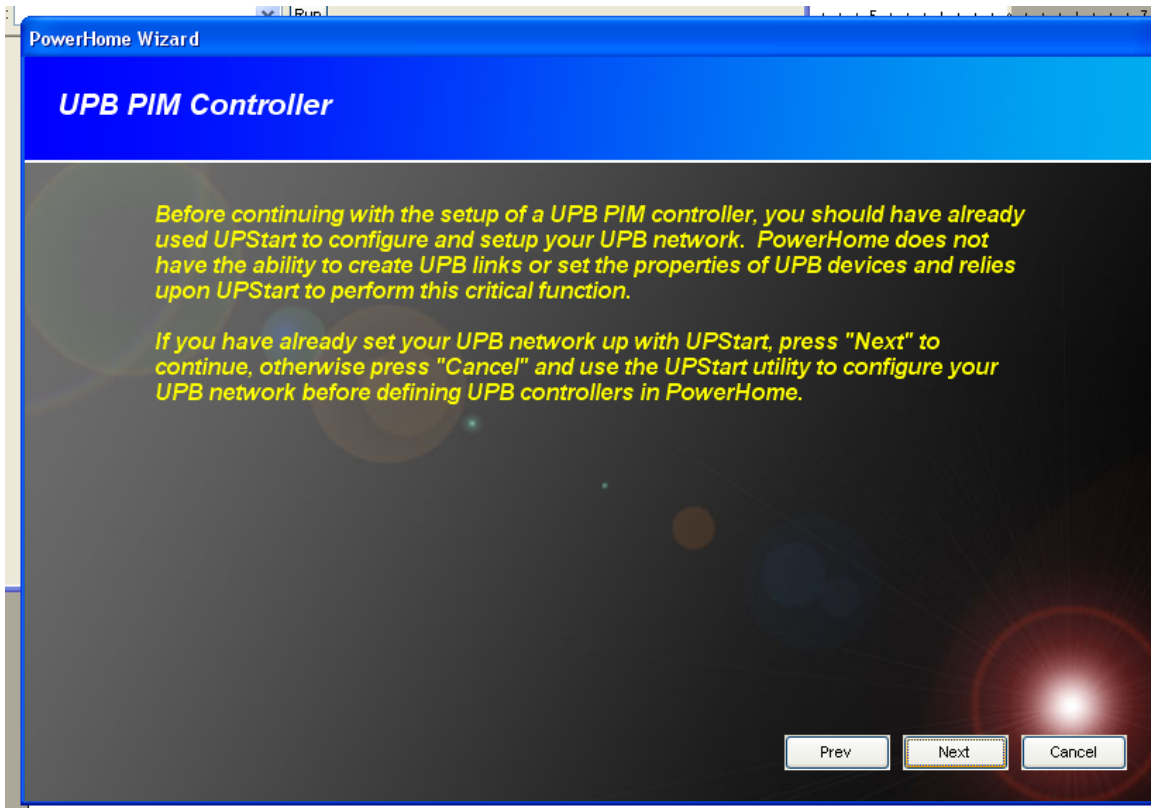
**If you chose Insteon, you will see this screen:**



There are six different Insteon Controllers available. Check your controller and make sure it's connected to both your PC and power and choose the correct radio button.

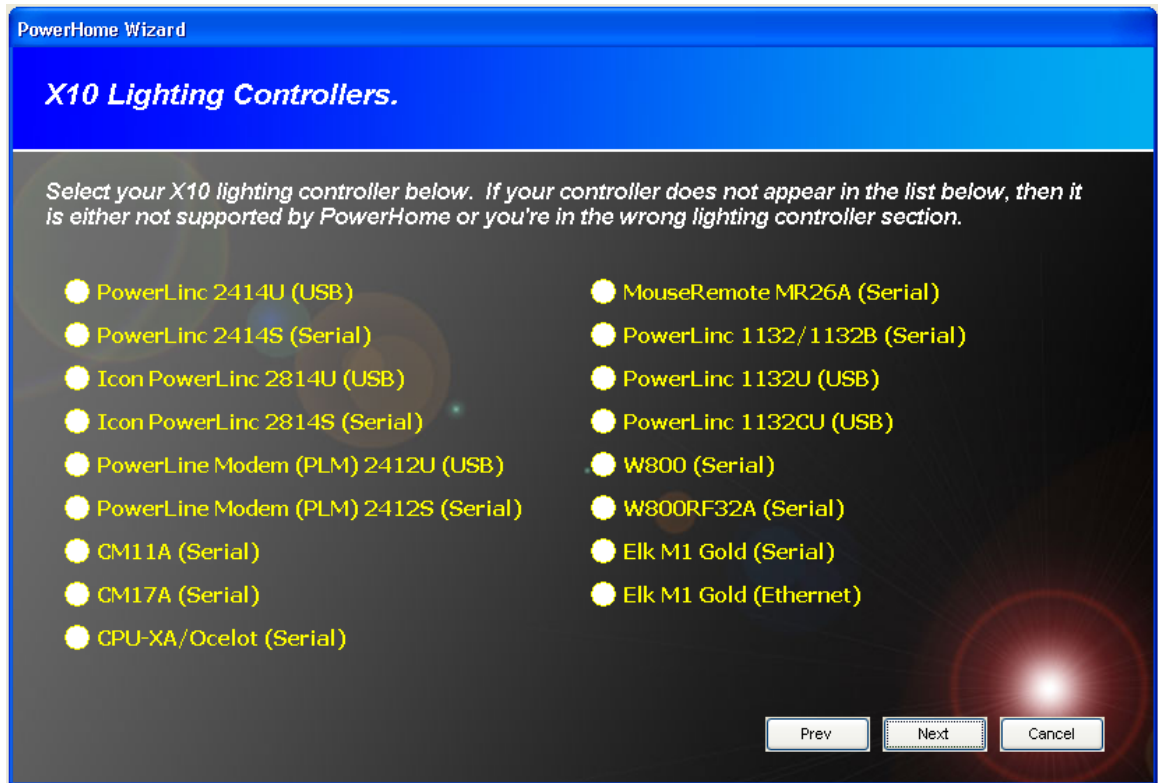
**If you chose UPB you will see this screen:**





PowerHome2 does not recreate the functionality of the free UpStart program that comes with UPB. First, setup your PIM via UpStart. Then import those settings into PowerHome using the wizard. PowerHome then can control your UPB devices in many sophisticated ways.

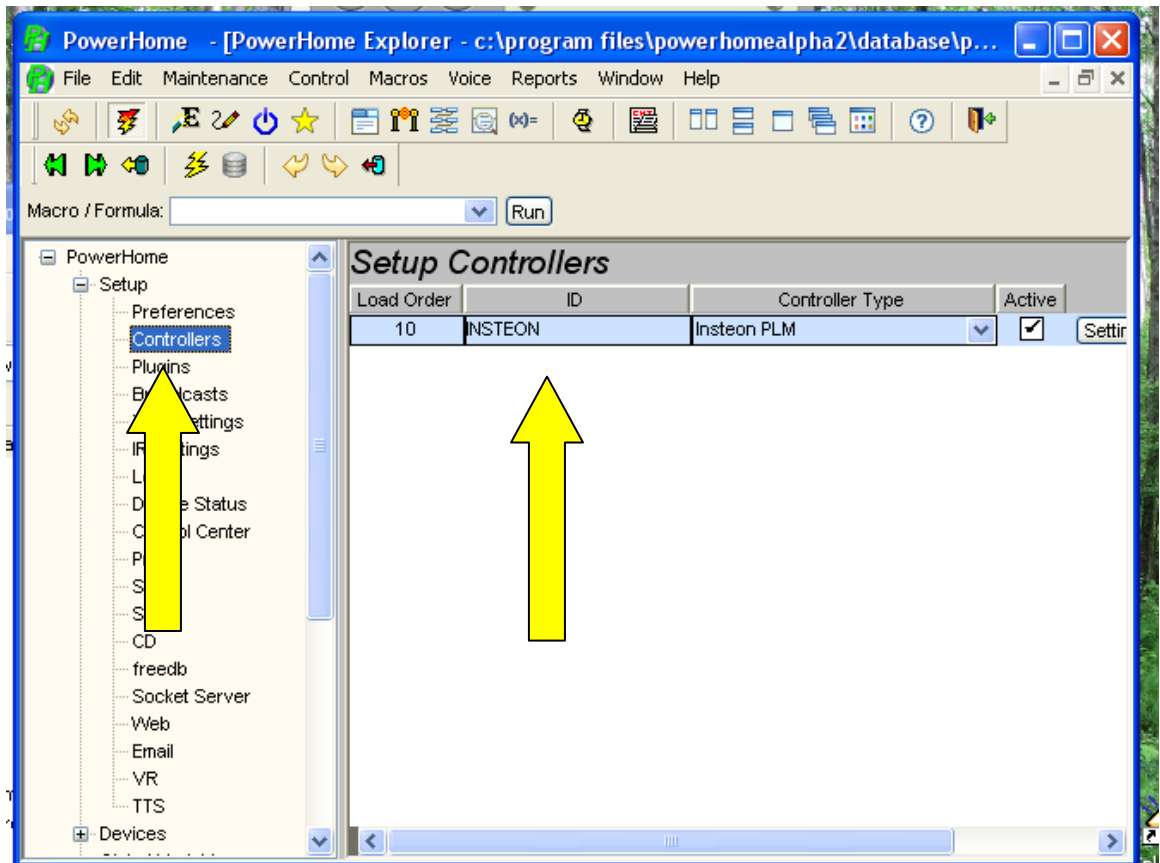
**If you chose X-10 you will see the following screen:**



Some of the X-10 controllers double as Insteon Controllers. Select the appropriate X-10 controller and verify that it is connected to your PC and as well as the powerline (for the controllers that require it).

The remaining Controller Wizard screens are unique to each type of controller and are not reproduced in this Quick Start Guide. Just follow the instructions on each screen and enter the information requested for your controller.

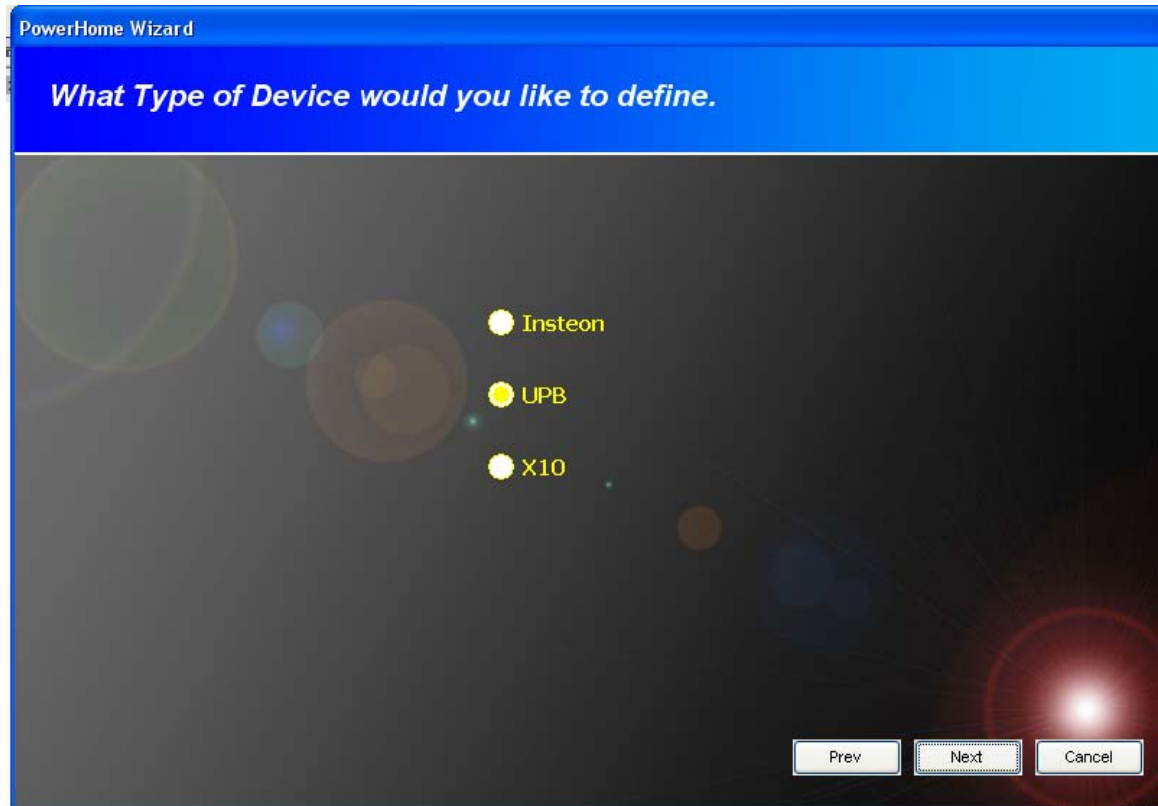
6. The last step is to click on the Next button. The Wizard automatically uses the information entered to set up your controller. After creating the controller entry, PowerHome2 automatically reinitializes so that PowerHome2 and your controller can work together.
7. If you would like to check the information entered for your controller or modify the information, you can do so by navigating to **PowerHome Explorer>Setup>Controllers**.



### 2.2.2 The Device Wizard ★

The Device Wizard lets you tell PowerHome2 what Devices (eg. light switches) you have in your home. This is done automatically if possible, manually if automatic is not available, or a combination of both methods.

1. Click on the Wizard toolbar button ★ to bring up the Wizard screen.
2. Click on the Devices radio button.
3. Click Next.



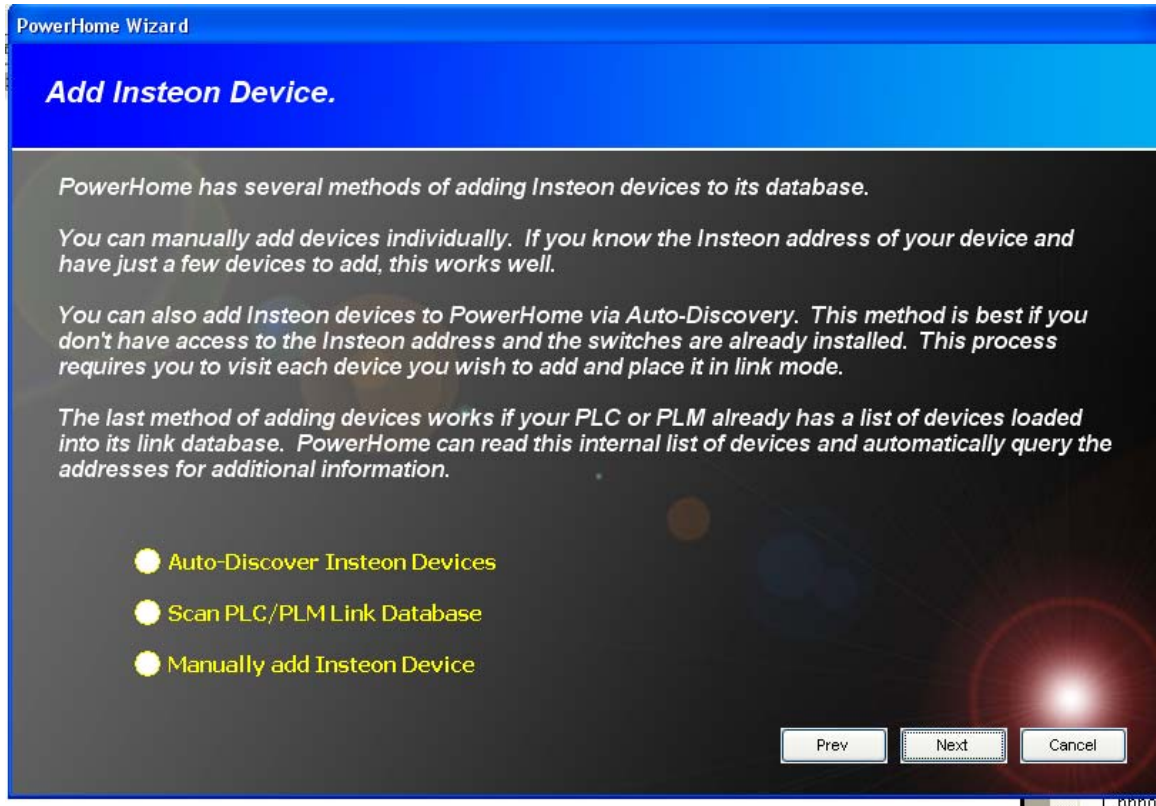
3. Choose the type of Device you have. If you have more than one type of device you can run the Device Wizard a second and third time later.
4. Click Next.

### **2.2.2.1 Insteon Devices**

For Insteon Devices you have three ways of telling PowerHome2 about those devices.

- a. You can manually add each device. To add the device manually you have to know the address of each Insteon device. The address of an insteon device is a 6 digit hexadecimal number usually found on the front of the device. This method works well if you only have a few Insteon devices.
- b. If you have an existing Insteon setup with a PLC or PLM controller, PowerHome2 can automatically read the list of devices from the PLC or PLM by scanning the controller and then automatically scanning each device for additional information.
- c. For a larger Insteon installation that has not yet been set up, PowerHome2 can Auto-Discover each device. This requires you to visit each device and place the device in link mode. PowerHome2 then scans the device and plays a tune to let you know it has discovered the device. After taking the device out of

link mode, you visit the next device to continue the Auto Discovery process.



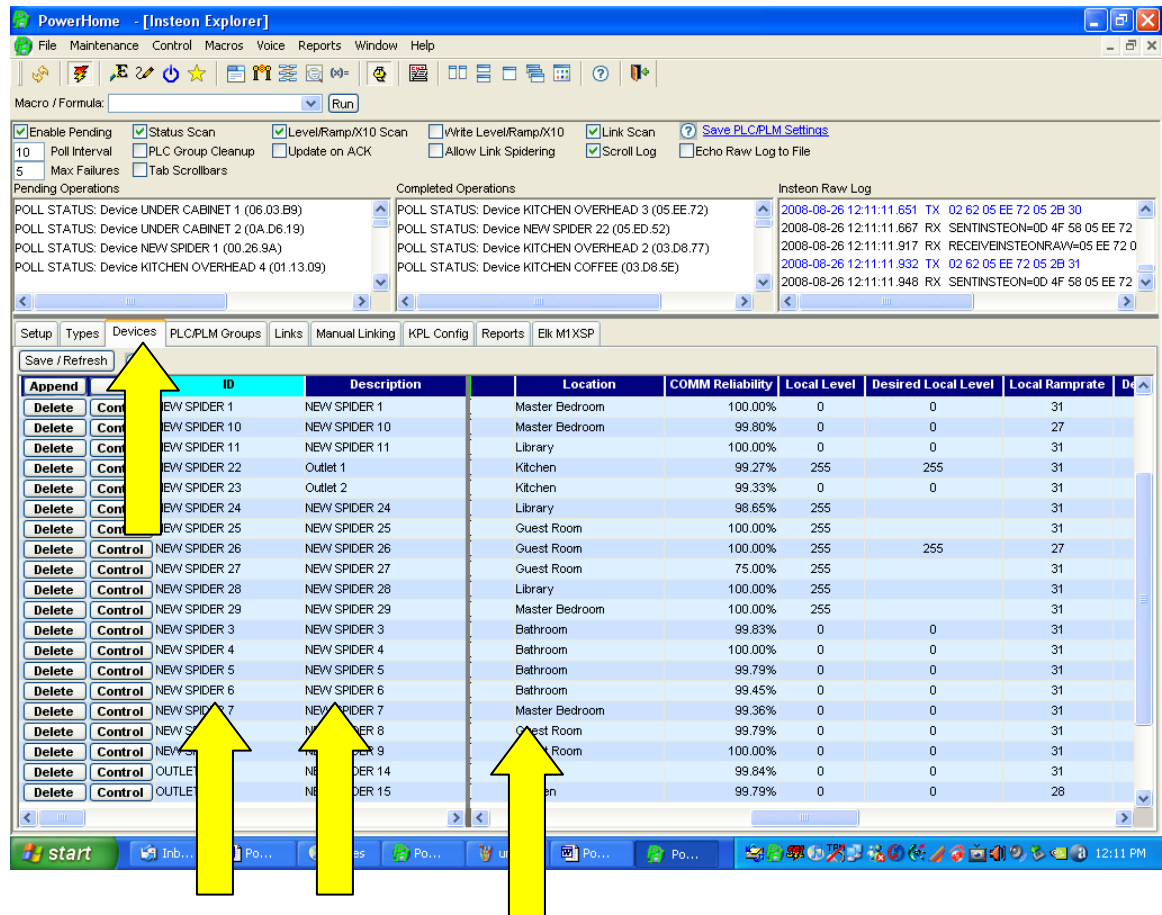
5. Click on the appropriate radio button.
6. Click Next.

The remaining Device Wizard screens for Insteon Devices are unique to each type of discovery method and are not reproduced in this Quick Start Guide. Just follow the instruction on each screen and enter any information requested for your device.

7. After you have gone through each screen Click Next and then Click Exit.

**Note:** If you used the Auto Discover method or the Scan PLC/PLM method, PowerHome2 gave your devices sequential names and numbers. It is important to change those device IDs to names that have meaning to you (e.g. from Spider Link1 to Kitchen Overhead). It is equally important to enter a description of your choosing for each device and to enter each device's location (e.g. Kitchen, Master Bedroom) because the descriptions and locations you enter will be used by the Control Center Wizard to create graphic screens.

To enter this information navigate to **PowerHome Explorer>Devices>Insteon>Units** or click the **Insteon Explorer toolbar button and go to the Devices tab**. You can enter the information in either screen. Make sure to press F5 (PowerHome Explorer) or the Save/Refresh (Insteon Explorer) after you have entered the name, description and location to save the information.



### 2.2.2.2 UPB Devices

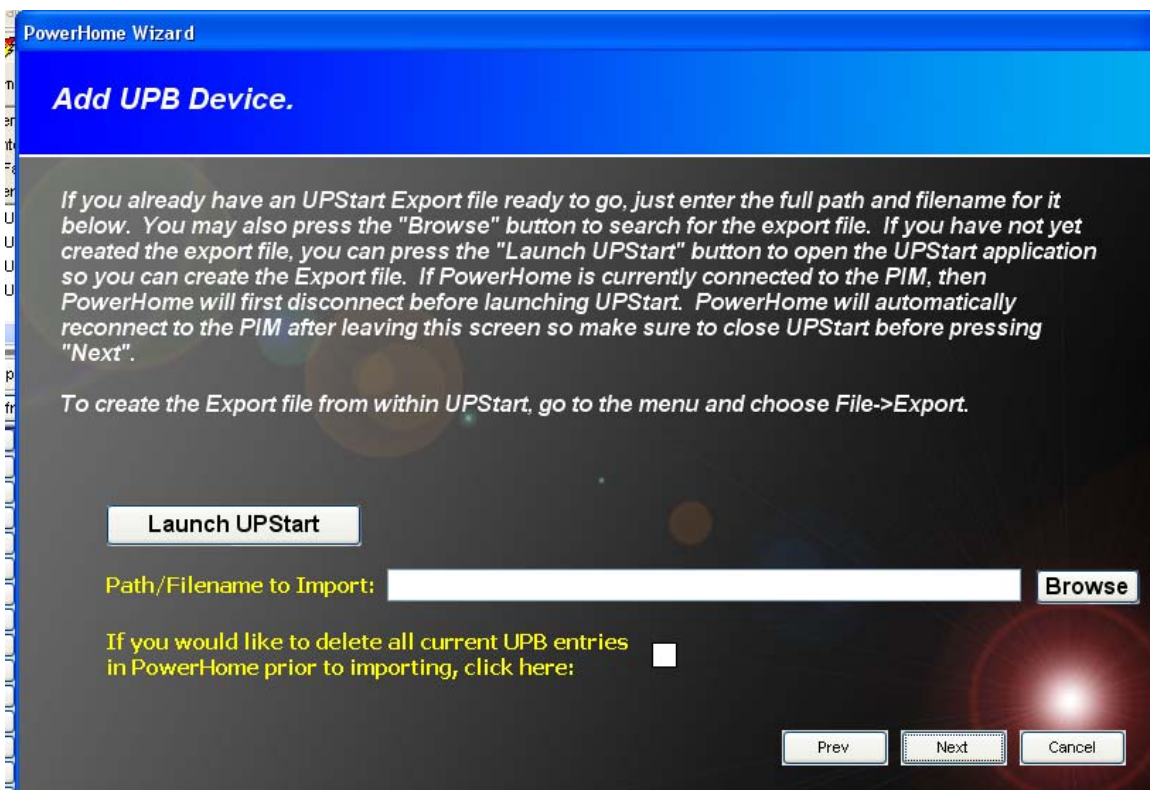
For UPB devices, PowerHome2 imports all the devices, their configuration and links already created in the free UPStart software that comes with UPB devices.

1. To import your UPB device information from UPStart, Click Next.

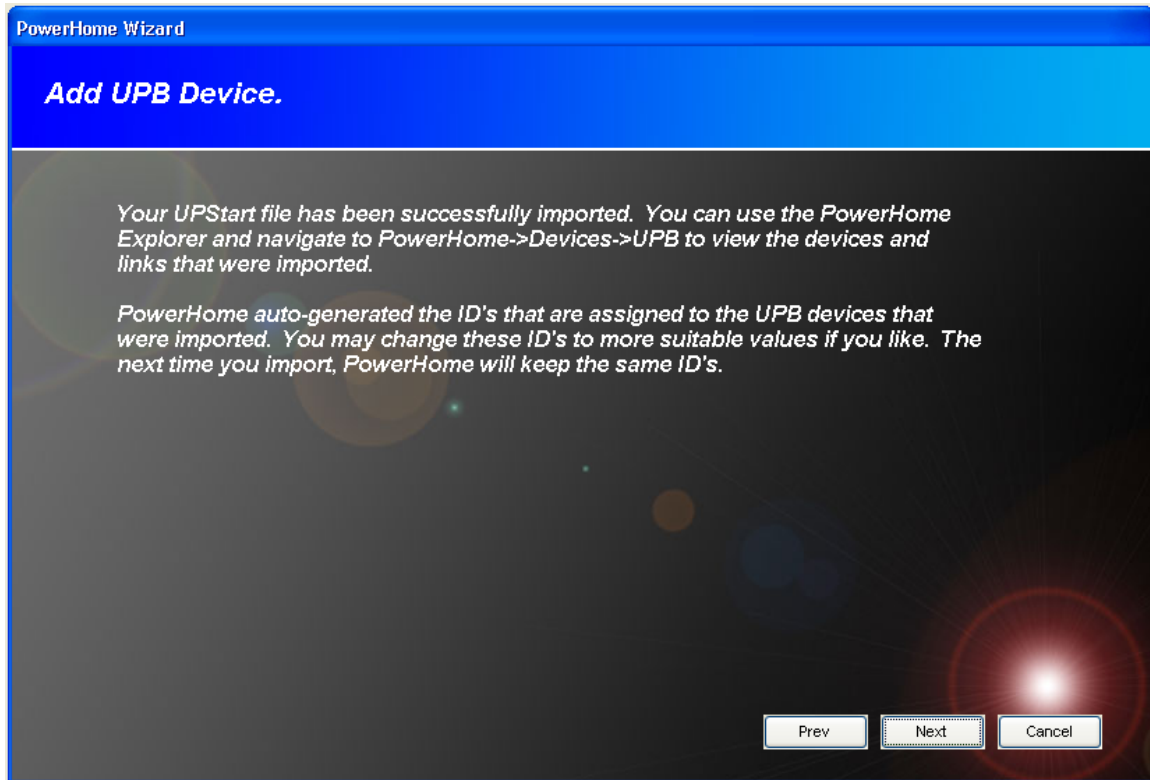




2. Enter the file name and path of your UPStart export file. Or follow the directions on the screen to start UPStart and create an export file.



3. Click Next. The import process is fairly quick and when complete, will give you the following screen:



### **2.2.2.3 X-10 Devices**

X-10 Devices can be added manually to PowerHome through the wizard and is relatively simple. Below is the X-10 Device screen:



PowerHome Wizard

### Add X10 Device.

You have chosen to add an X10 Device to the PowerHome database. The wizard will try to streamline this process as much as possible. You will need to know the X10 Device's House code (A - P) and Unit code (1 - 16). You will also need to give the device a description.

You can also optionally specify the "Location" that this device is in. While the Location field is optional, it is recommended that you enter an appropriate value so that Control Center screens can be auto-generated for the device.

Enter the X10 House Code (A - P):  Enter the X10 Unit Code (1 - 16):

Enter a Description for this Device. The Description can be mixed case and up to 50 characters long:

The Location is not required, but recommended. Either type in a location or choose an existing location from the dropdown:

Prev Next Cancel

Enter the housecode, unitcode, description, and a location. Click Next. You'll be presented with the screen below:

PowerHome Wizard

### Add X10 Device.

We're almost done. We need just two more bits of information before the wizard creates your X10 Device in the PowerHome database. The first thing we need is a unique ID for your X10 Device. Almost every entity in PowerHome requires this unique ID.

ID's should be relatively short (since you may be typing them), but descriptive.

Below is a suggested ID that PowerHome auto-generated based upon the description. If you're happy with it, you don't need to change it. Otherwise, enter your preferred ID.

The last thing we need is to identify the type of X10 Device you're adding. Select the type of your X10 Device from the dropdown list.

Enter a unique ID for the X10 Device:

Select your X10 Device Type:

Prev Next Cancel

As with the other Device wizard screens, PowerHome will automatically generate a device ID for you which you can accept or change. You'll also need to select the appropriate X-10 device type. Click Next and your X-10 device will be created.

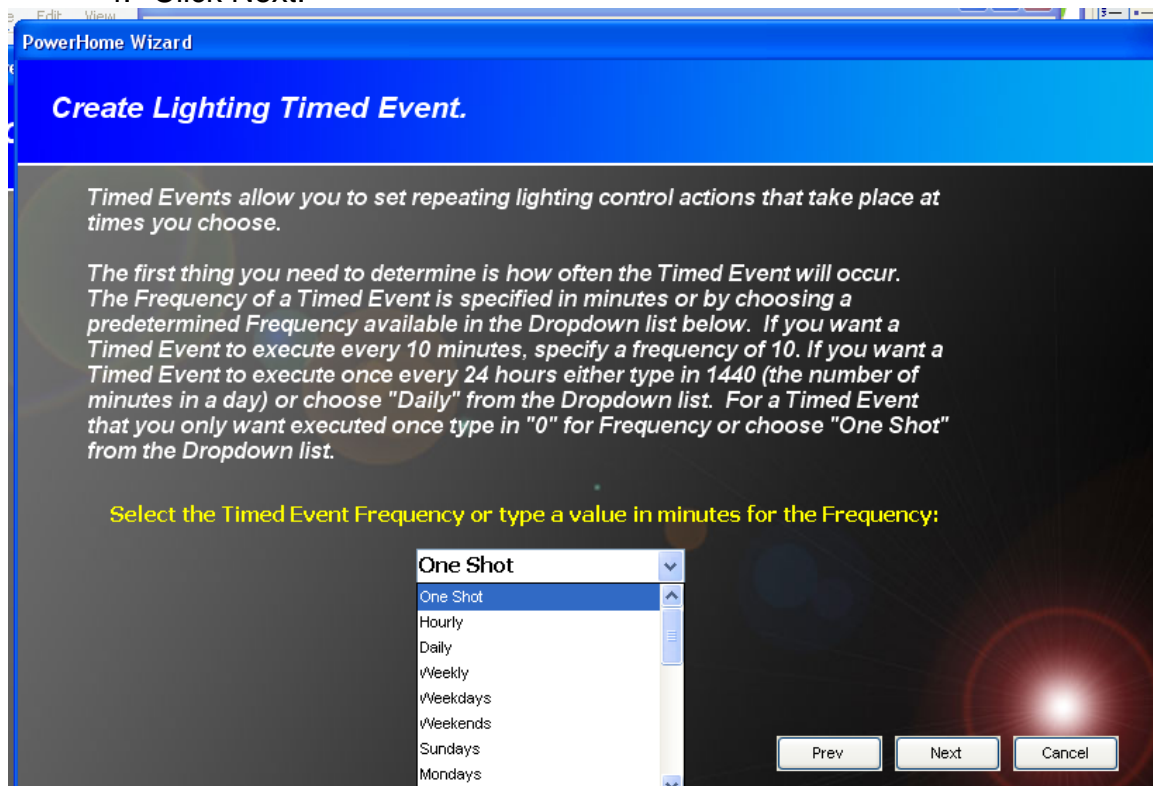
### 2.2.3 The Timed Events Wizard★

Timed Events is a powerful feature of PowerHome2. It allows you to control a home automation device at a certain day, date and time and to repeat that event at a frequency you choose.

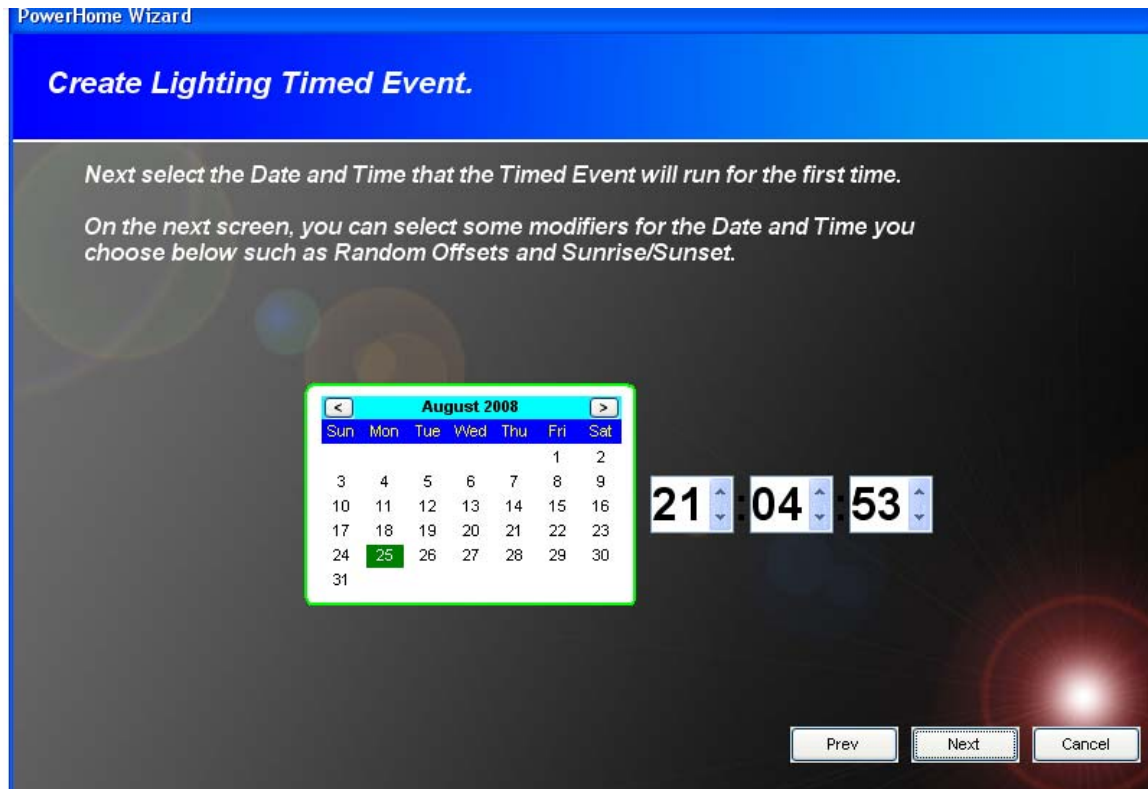
For example you can turn on an outside light at dusk or 1 hour and 10 minutes after dusk or at a random time after dusk. You can turn that light off at 1 a.m., at dawn or 35 minutes before or after dawn, or only on Tuesdays.

Those types of Timed Events can be easily created using the Timed Events Wizard. The Timed Events Wizard can be used repeatedly to create many Timed Events. To create more sophisticated Timed Events, instead of using the Wizard, from the toolbar click on the PowerHome Explorer button and navigate to Timed Events.

1. To use the Timed Events Wizard to create a Timed Event, click on the Wizard button★ on the toolbar.
2. Click on the Timed Events radio button and then click Next.
3. Read the screen that is presented and then chose a frequency from the dropdown list or type in the frequency in minutes.
4. Click Next.



5. Choose the date and time to start the Timed Event.
6. Click Next.



7. On the following screen either click on Next or chose an Offset type to the Timed Event such as Sunrise, Sunset, Dawn or Dusk and then an offset amount. Click Next.

PowerHome Wizard

## Create Lighting Timed Event.

*You've selected the frequency and the Start Date/Time of your Timed Event. If you want your Timed Event to start at exactly the time you selected, you can press "Next" and skip this page. Otherwise, you can select modifiers to your Start Date/Time below.*

Select the Timing for your Timed Event:

Select the Offset type for your Timed Event:

Select the Offset Amount.  
If you selected an Offset Type, enter the offset in minutes here:

Exact  
Sunrise  
Sunset  
Dawn  
Dusk

0

Prev Next Cancel

8. Choose the type of device you want to control from the dropdown list (e.g. Insteon, X-10, UPB).
9. Choose the actual device you want to control from the dropdown list (e.g. Kitchen Light).
10. Choose the action you want to be performed at the specified time (e.g. on, off, dim).
11. Add additional information that might be necessary for the particular action you chose (e.g. if you chose Dim, you must enter a value like 50 to indicate the dim level.)
12. Click Next.

PowerHome Wizard

## Create Lighting Timed Event.

The last thing the wizard needs to create your Timed Event is the actual device and action you'd like performed when the Timed Event fires. While many types of actions are allowed for Timed Events, this wizard only creates basic actions. To create more sophisticated Timed Events use the PowerHome Explorer.

Below, select the type of Device you wish to control, the actual device, and the action to perform. Depending upon the action, you may also need to specify a "Level".

Select the Type of Device to Control:

Select the ID of the Device to Control:

Select the Action to be performed on the Device:

Certain actions required additional data in this field. For most actions, this additional data consists of a number from 0 to 100 representing the Level:

KITCHEN 1  
Kitchen 1

KITCHEN BACK  
Kitchen Back

KITCHEN COFFEE  
Kitchen Coffee

KITCHEN OVERHEAD 2  
Kitchen Overhead3

Prev Next Cancel

The following screen summarizes the Timed Event you have just created.

13. Click Next.

**PowerHome Wizard**

## Create Lighting Timed Event.

The wizard has created your Timed Event and it is ready to go. Below is the details concerning your newly created Timed Event. If you would like to modify or delete this Timed Event, you can find it in the PowerHome Explorer under POWERHOME->TIMED EVENTS.

Unique Timed Event ID:  Disabled: ☐

Actual Start Time:  Timing:

Frequency:

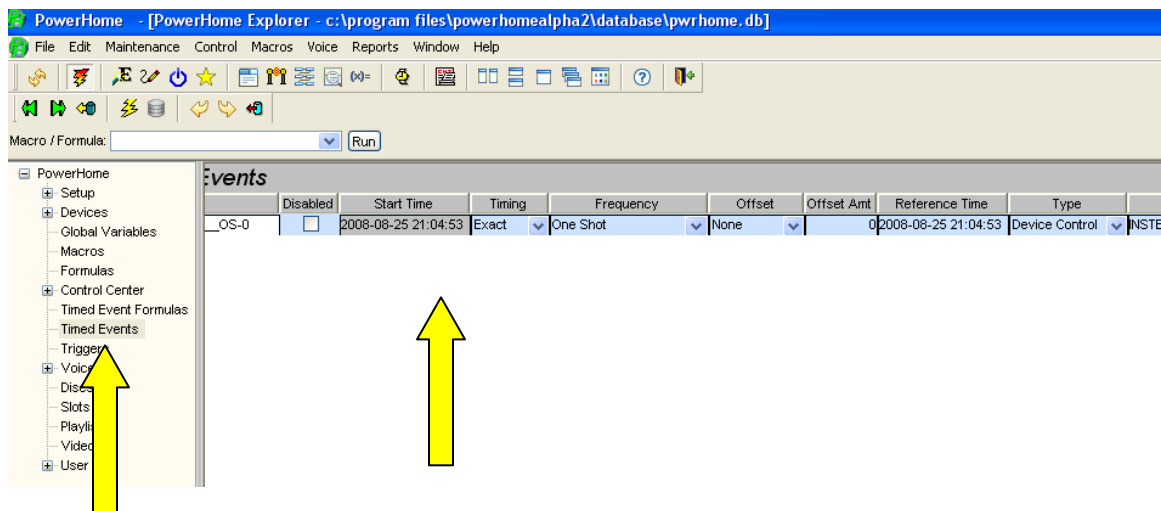
Offset Type:  Offset Amount:

Reference Time:  Action Type:

Action:

Boolean:

To check or modify the Timed Event you just created, navigate to the **PowerHome Explorer>Timed Event**.



## 2.2.4 The Control Center Wizard ★

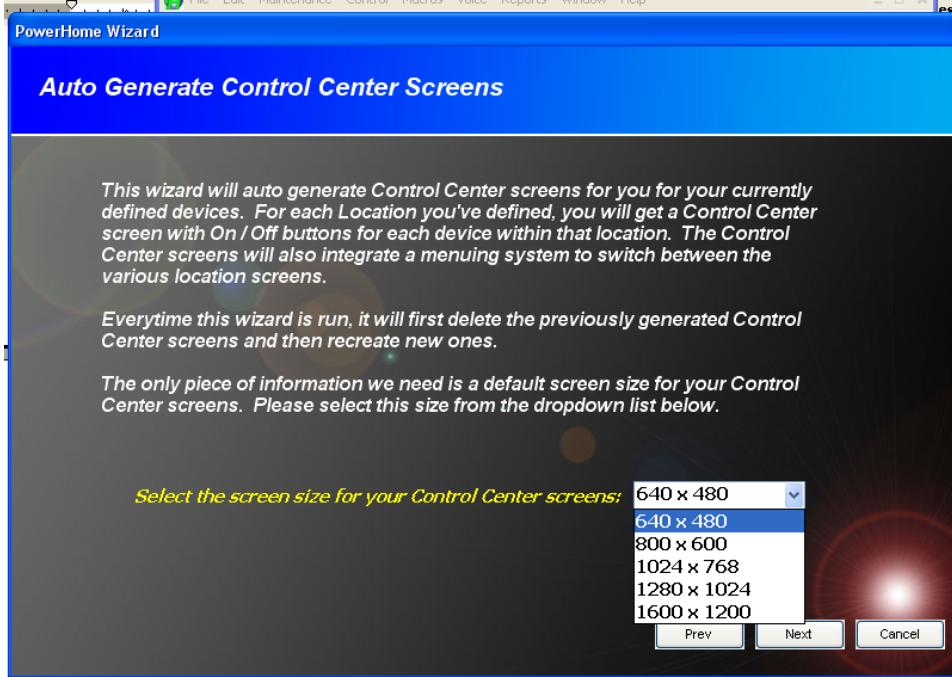
Using the Control Center you can create varied graphical screens depicting and controlling your home automation devices. The Control Center Wizard automatically creates a series of basic graphic screens based upon the home



automation devices it finds entered in PowerHome2 either through the Device Wizard or manually. If you later add (or remove) devices you can rerun the Control Center Wizard and it will delete the old screens and create new ones. The screens added by the Control Center Wizard can also be changed by you at any time by right clicking on a blank space on a Control Center screen and clicking on **Open Design View**.

You can choose the size of the Control Center screens created by the wizard to fit your monitor or touch screen.

1. Click on the Wizard toolbar button  to bring up the Wizard screen.
2. Click on the Control Center radio button to bring up this screen.



3. Chose a screen size and click Next.  
The Control Center screens will be created quickly. Click Next.

To see the screen just created Press Alt F1 or Click on the Control menu and then the Control Center dropdown item.

This is an example of the screen created by the Control Center Wizard.



The Control Center is one of the many ways you can control your home automation devices using PowerHome2. The Control Center screen the Control Center Wizard has created for you is a beginner's version with basic functionality and graphics. One of the great things about PowerHome2 is that you can create as many Control Center screens as you want. You can make each Control Center screen a specific size to fit a touch screen or phone (for web access), have simple graphics or complex graphics. You can have one control center screen control all your devices or have one screen per room. The choices are almost limitless.



### **Key Features of PowerHome**

Insteon and X-10 Control via PowerLinc Controller V2 (Serial and USB) or the Powerline Modem (PLM)

UPB support via any PIM after configuration of UPB devices with the free UPSTART program

Supports all Insteon Devices, auto discovery, software linking and spidering

Full KPL (Keypad), Remotelinc, IRLinc, and Insteon Thermostat support

Supports Elk M1 Gold (Serial and Ethernet)

Fully programmable interface via your choice of languages. You can use the internal macro and formula scripting or any language supported by Windows Script such as VBScript and JScript

Internal web server for remote control and monitoring. Supports user defined dynamic content via PSP (PowerHome Server Pages). Also support for custom web pages via plugins

Voice recognition

Text to speech

User definable remote layouts allow for virtually any keystroke combination

Touch screen friendly interface

Customizable display allows you to show floor plan layouts and place controls over actual photos

X-10 control via CM11A, CM17A firecracker, MR26A Mouse Remote, CPU-XA/Ocelot, W800,

W800RF32, PowerLinc USB and Serial, PowerLinc Modem, RS-232, IR, and Elk M1 Gold

Infrared control via RedRat2, RedRat3, CPU-XA/Ocelot, Slink-e, USB-UIRT, Global Cache. Also supports multi-zone IR

Digital Input/Output, and Analog Input/Output control with the CPU-XA/Ocelot (with additional Adicon modules), Elk M1 Gold, Velleman K8000, Insteon SimpleHomeNet devices

Unlimited number of controllers supported

CD jukebox player control with playlists and auto programming

CD database with freedb support

Video database

Macros

Triggers

Timed events

Full event and web logging

Multi-X control allows a sequence of X-10 commands for control (access 256 macros from your palm pad by pressing 2 buttons, 64 macros from your keychain remote by pressing 3 buttons.)

Sunrise, sunset, and civil twilight calculations

Socket Server for remote control of PowerHome from other applications and machines

Windows Messaging Interface for additional remote control capabilities

Windows Script Host Interface

Built-in WAP server for remote control via an internet enabled cell phone

Generic plugin capability and SDK. Create your own ActiveX plugins to extend and enhance PowerHome functionality. All plugins run in their own thread for maximum performance and reliability. CallerID, Email, and sample plugins included with PowerHome

PowerHome can run as a service

UDP Broadcast Server. Third party programs and applications are capable of monitoring PowerHome internals and reacting appropriately

### **Technical Overview**

Written in Sybase PowerBuilder version 10.5

All code and data maintained in Sybase Adaptive Server Anywhere Database system

Custom DLL's written in Microsoft Visual C and assembly

Voice recognition licensed from Microsoft (SAPI 4.0a)

Text to Speech licensed from Microsoft (SAPI 4.0a and SAPI 5)

## ***System Requirements***

Windows NT/2000/XP/Vista

Pentium 233 MHZ with 128 megs of RAM recommended minimum for voice recognition. Certain operating systems may have operating requirements beyond the above minimums)

Unused serial port/s (CM11A interface, CM17A firecracker, MR26A Mouse remote, RedRat2, CPU-XA/Ocelot, Slink-e, W800, W800RF32, PowerLinc RS-232, Elk M1 Gold Serial, Insteon PowerLinc 2414S, Insteon PLM, UPB PIM)

Unused parallel port/s (Velleman K8000)

Unused USB port (RedRat3, USB-UIRT, PowerLinc USB, Insteon PowerLinc 2414U)

Sound card (text to speech and voice recognition)

Network connection (for Web Server and Socket Server access. Elk M1 Gold Ethernet, Global Cache GC-100)

Internet connection (for remote Web Access and freedb support)